



KEEP PEACE OF MIND FOR YOUR CARED ONES



3G Pet GPS tracker: RF-V40



wifi-anti-lost



IP66 waterproof



Realtime tracking



voice



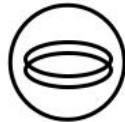
Geo fence



Historical route



Smart LED indicator



split-type design



3G Pet GPS tracker main functions

1. Multiple positioning

GSM four frequency bands +GPS tracking+WiFi tracking , Wide coverage, strong signal, fast positioning



GPS Positioning accuracy: 10-15m

Wifi Positioning accuracy: 15-100m

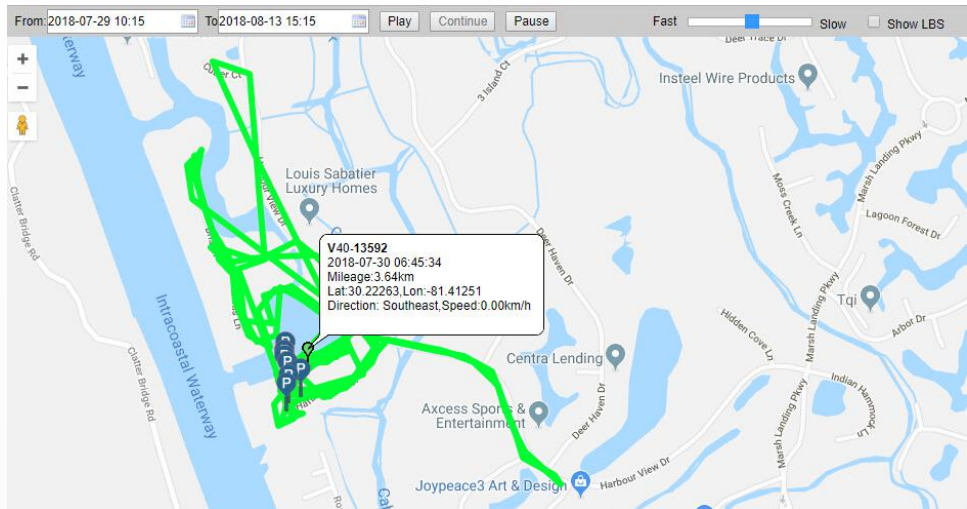
LBS GPS Positioning accuracy: 100-1000m



3G Pet GPS tracker main functions

2. Historical route display

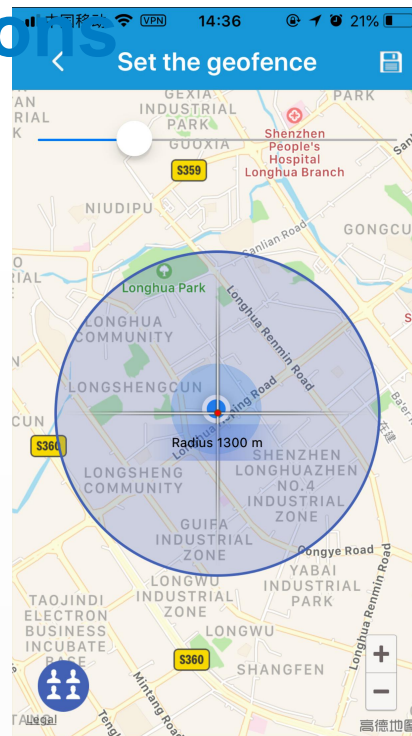
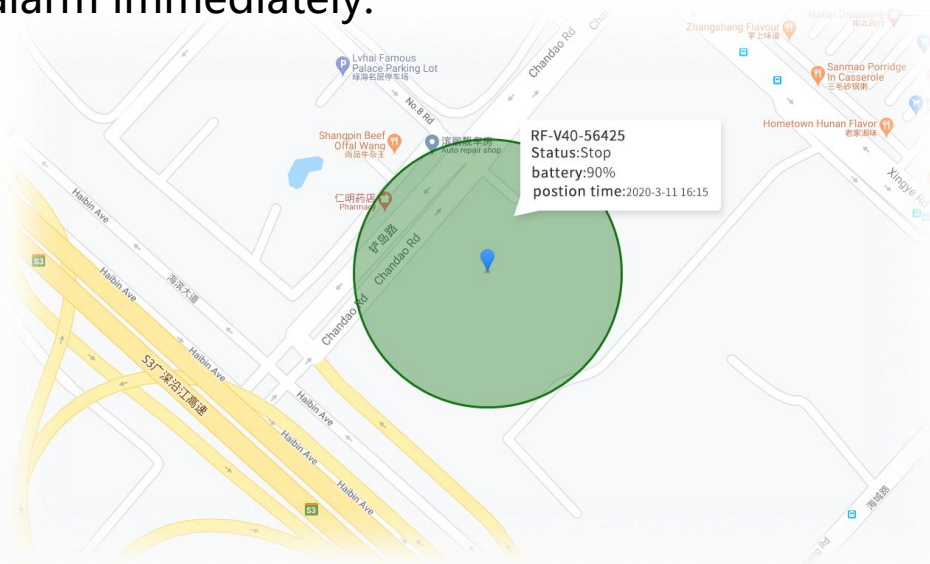
Record the action track within 90 days and can check the playback at any time.



3G Pet GPS tracker main functions

3. Geo-fence

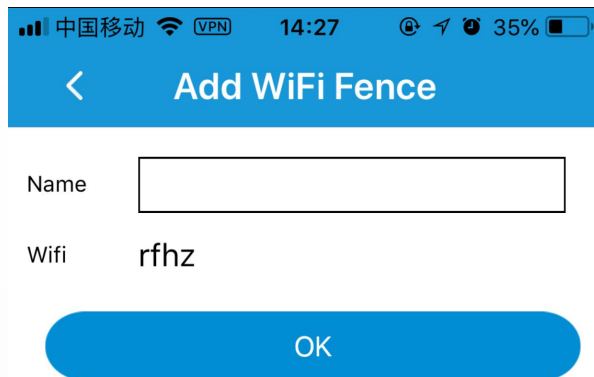
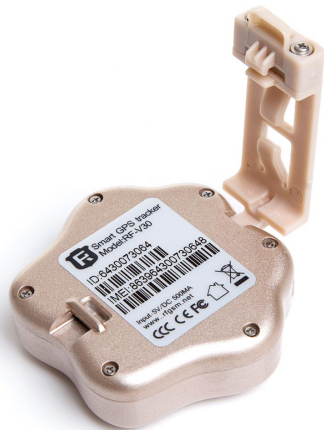
Creative Geo-fence on Google map,when pet leave or come back home, you will get the alarm immediately.



3G Pet GPS tracker main functions

4. WiFi Fence

Creative WiFi fence, binding the WiFi hot spot, when loved ones leave or come back home, you will get the alarm immediately.



3G Pet GPS tracker main functions

5. LED smart rolling light

Creative LED smart rolling lights, it will turn on automatically in dark, Easy to find them at night



3G Pet GPS tracker main functions

6. Waterproof IP66

Waterproof is the most basic feature when choosing a pet tracker, RF-V30 pet GPS tracker is waterproof IP66, dustproof, quakeproof. So enjoy your happy time with it from now on.



3G Pet GPS tracker main functions

7. Long time standby

10 minutes once positioning, it can standby for about 2 days.
Turn off timing positioning, it can standby for about 10 days.



3G Pet GPS tracker main functions

8. Package details



Product Specification:

GSM network(Quad band): 850/900/1800/1900MHZ

GPRS standard: Class 12, TCP/IP

Positioning time: Cold start 30 Sec (open sky)

Warm start 29 Sec (open sky)

Hot start 5 Sec (open sky)

GPS Positioning accuracy: 10-15m (open sky)

Wifi Positioning accuracy: 15-100m

Working temperature: -20°C ~ +70°C

Working humidity: 5% ~ 95% RH

Host size: 47*50*15mm

Host weight: 40g

Package size: 8.2*8.2*4.6cm

Package weight: 110g

